

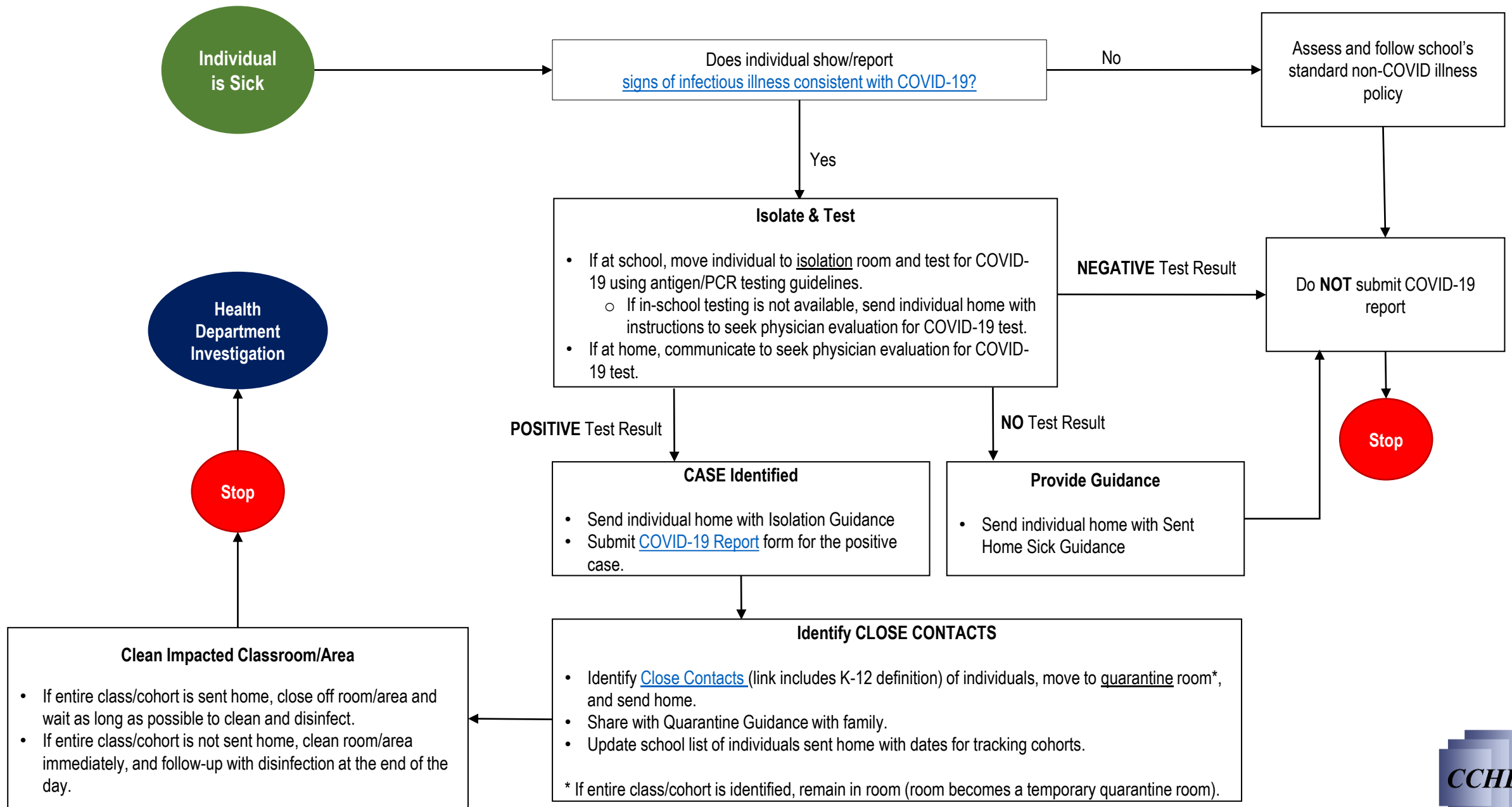
Responding to COVID-19 in schools is a partnership between schools and the Chester County Health Department. The purpose of this document is outline the steps necessary to respond to COVID-19 based upon:

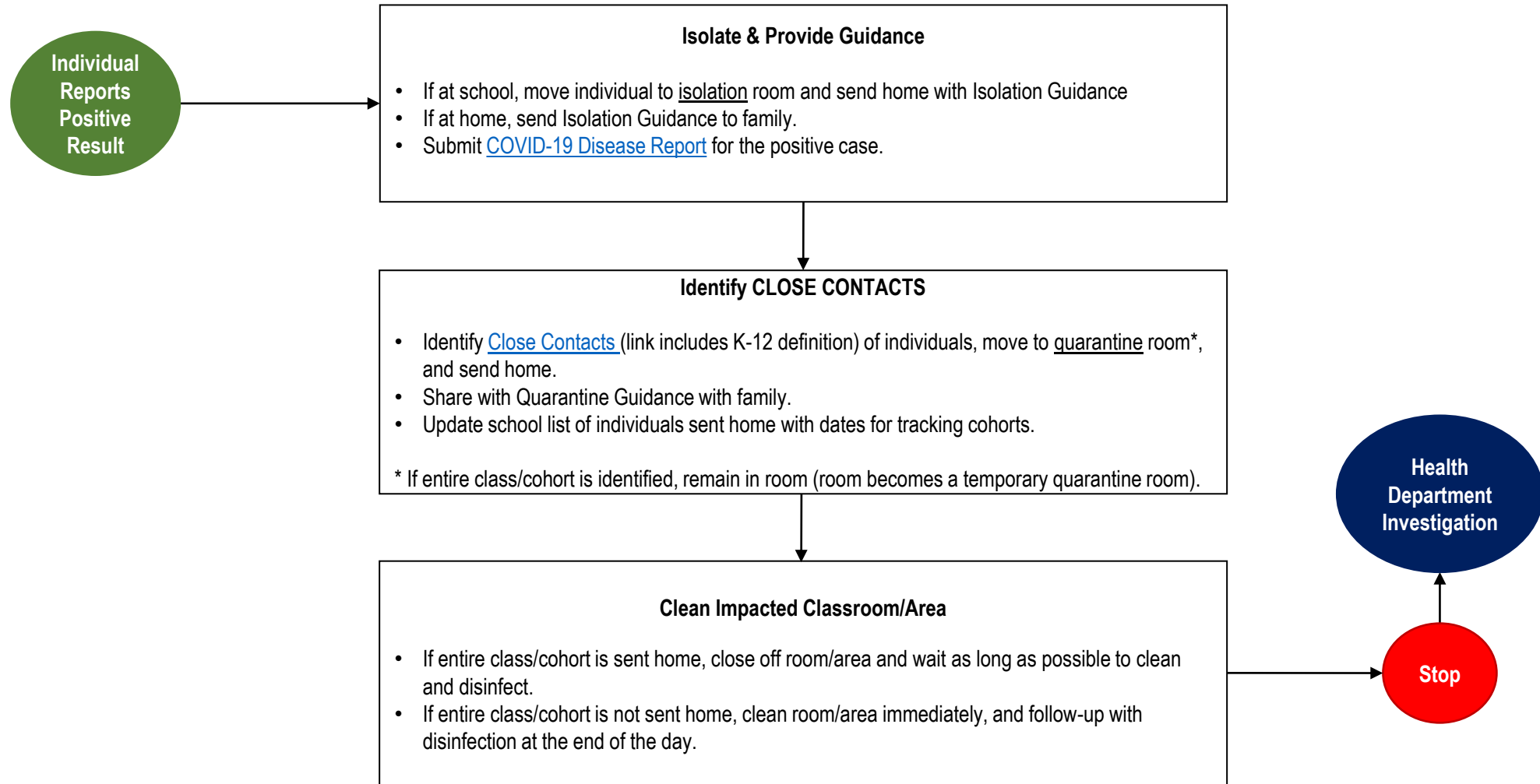
- ✓ Display of symptoms
- ✓ Report of positive COVID-19 test result
- ✓ Report of close contact

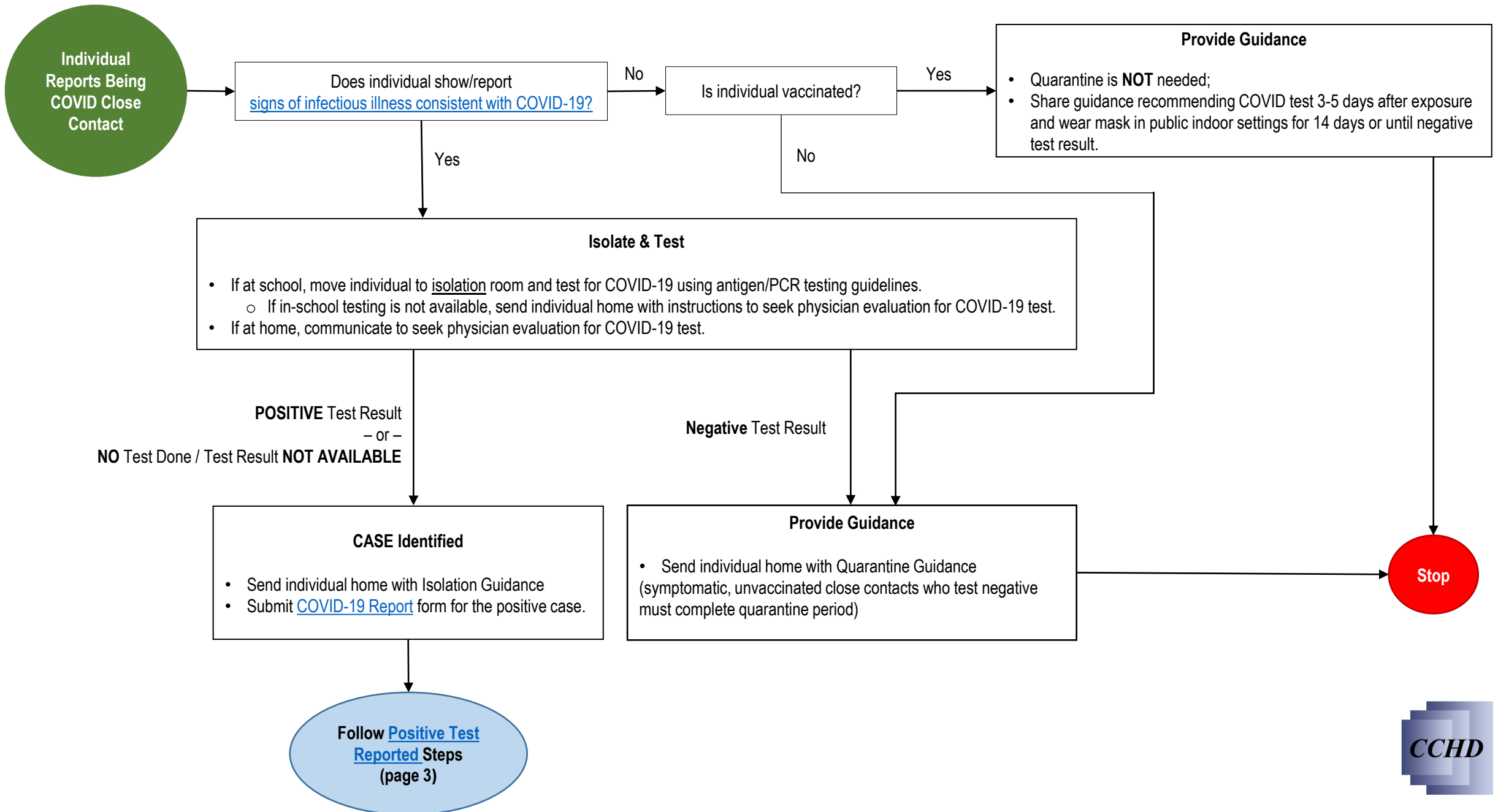
Schools should maintain complete records of individuals who are impacted by COVID due to illness, test result, being a contact.

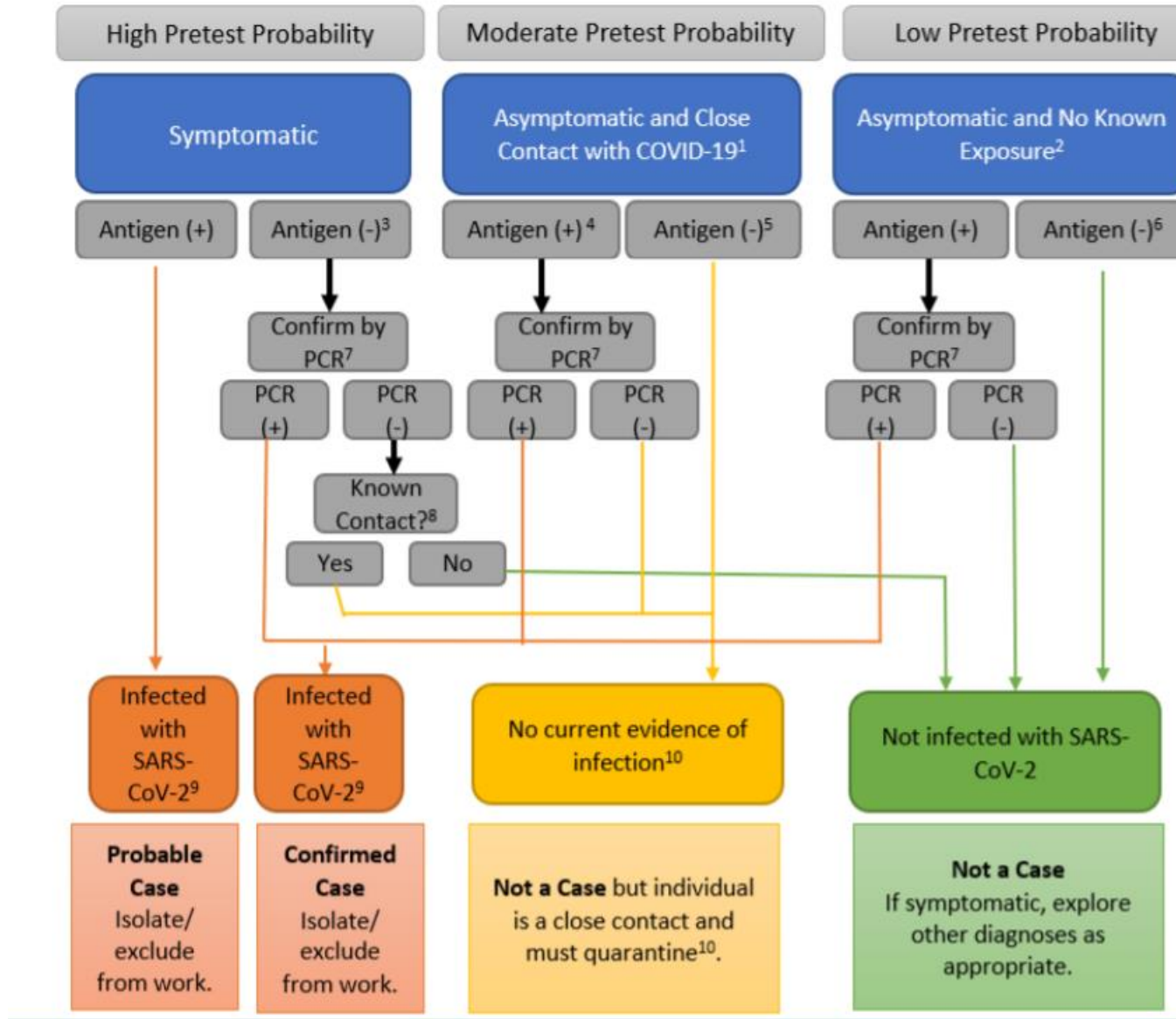
9/3/2021: Updated for asymptomatic and unvaccinated close contact.











## CLOSE CONTACT:

A close contact is someone who was within 6 feet of an infected person for a cumulative total of 15 minutes or more over a 24-hour period (for example, *three individual 5-minute exposures for a total of 15 minutes*).

- An infected person is considered contagious starting from 2 days before they have any symptoms (or, for asymptomatic patients, 2 days before the positive specimen collection date), until they meet criteria for discontinuing isolation.
- **Exception for K–12 Indoor Classroom Setting:** The close contact definition excludes students who were within 3 to 6 feet of an infected student if both the infected student and the exposed student(s) correctly and consistently wore well-fitting masks the entire time.
  - This exception DOES NOT apply to teachers, staff, or other adults in the indoor classroom setting.